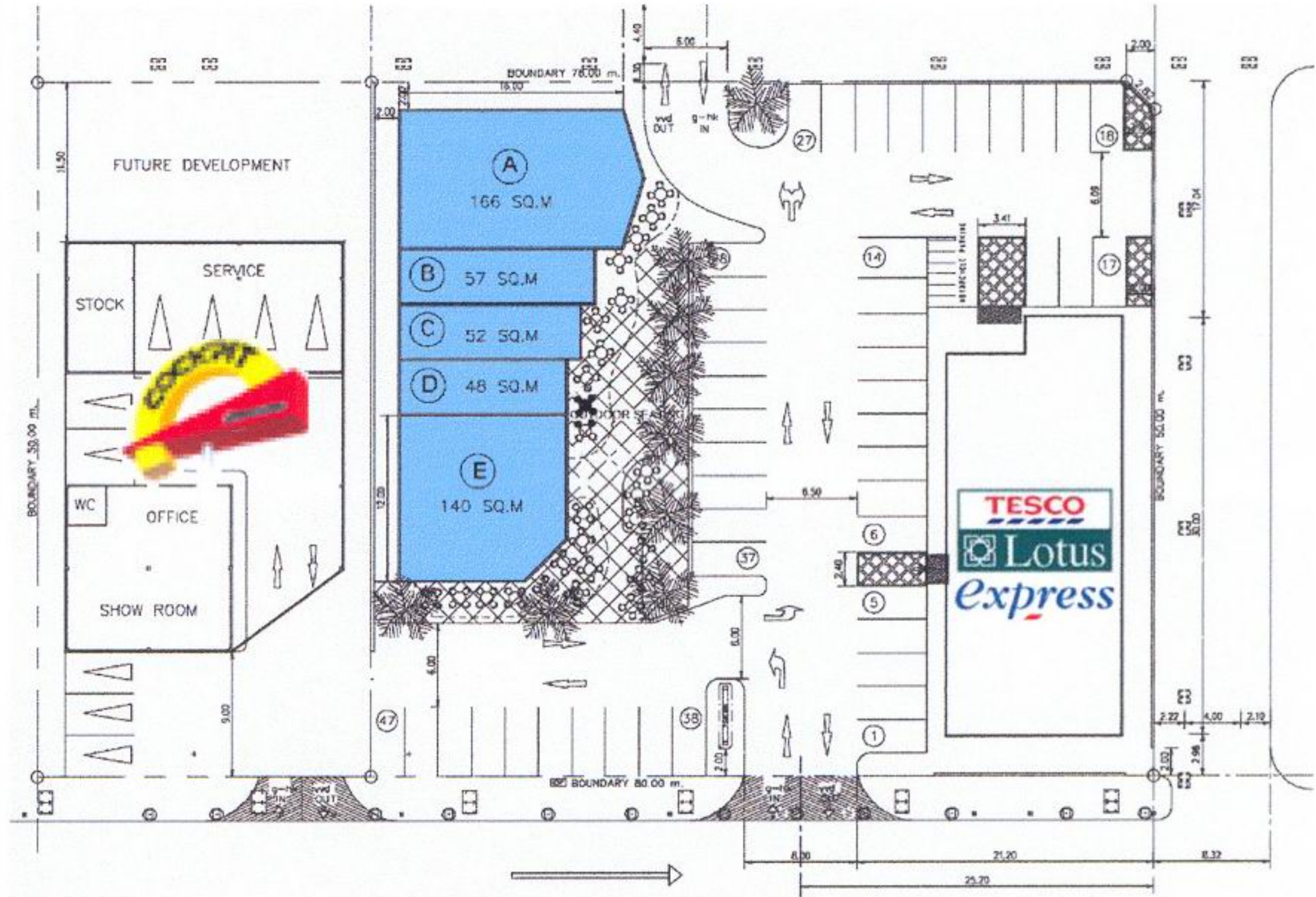


SF Town Center 9 (Ladprao 120)

800 Square Meters for Rent

This convenience center contains a group of small shops and stores dedicated to providing a limited range of personal services and sundries for customers making a quick stop.



Realizing the fact that "No Parking No Business", oversized car park is available to serve tomorrow's needs.

FOR RENT

- Join Modern Trade & Retail Store
- Prime Ladprao Retail Location
- Parking Over 50 Cars
- Lease Term 3 Years
- Excellent Demography: Over 50% of all population in Klongjun sub-district is in our trade area and average household income is 12% higher than average of Bangkok.

DEMOGRAPHIC DATA

Population	49,081	Persons
Household	20,243	Houses
Density	6,947	Persons/sq.m.
Average Household Income	23,069	Baht/HH/M

* Based on 1.5 Km. radius of the site

**Bangkok Average Household Income 20,589 Bath/HH/M

***Bangkok Density 3650.2 persons/sq.m.

LOCATION MAP



Ladprao Road, Klongjun Sub-District, Bangkok District, BKK

Opening date: end of September 2003

For more information, please contact:



Siam Future Development Public Company Limited

7/5 Moo 1 Ramkamhang Road, Saphansoong,
Bangkok 10240 Thailand

Tel: (66) 2729 4969 Fax: (66) 2729 4968

URL: <http://www.siamfuture.com>

CB Richard Ellis
NAVIGATING A NEW WORLD™

Ms. Kaimook Eaphsakul
Ms. Natchapak Witanomsat

CB Richard Ellis (Thailand) Co., Ltd.

Tel: (66) 2654-1111 Fax: (66) 2685-3300-1

keaphsakul@cbre.com

nwitanomsat@cbre.com

URL: <http://www.cbrichardellis.co.th>